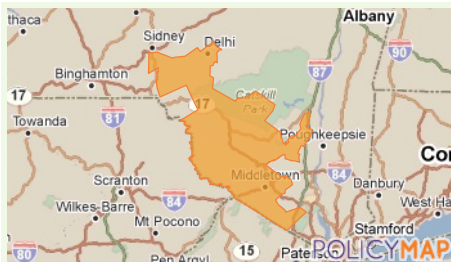


Current Report:

Community Profile Report of Custom Region:

Senate 42



Date: February 10, 2017

Proposed Area:

This area is located in Delaware County, Ulster County, Sullivan County, and Orange County, in the state of New York

It is located within or touches the following 2010 census tract(s): 36111950900, 36025970500, 36025970700, 36025971300, 36025970600, 36105950200, 36105951700, 36105950100, 36105951300, 36025970800, 36105952000, 36111954600, 36105952400, 36105950300, 36105950400, 36105952500, 36071014900, 36105952300, 36111954400, 36111954200, 36071011602, 36111954500, 36105950500, 36111954700, 36105952200, 36105952100, 36071011900, 36105950800, 36071015200, 36105951600, 36071011000, 36105950600, 36071011701, 36105951200, 36071014501, 36111953300, 36105951900, 36071012300, 36071011601, 36071011500, 36071014502, 36105951100, 36071011702, 36071014800, 36071011400, 36071011801, 36105951500, 36071011802, 36105951000, 36105950700, 36071014700, 36071014400, 36111952700, 36111955400, 36105950900, 36111952800, 36071010801, 36111954800, 36105951800, 36071012200, 36071014600, 36071012100, 36111953400, 36071011200, 36071011300, 36111953500, 36071011101, 36071001600, 36071002100, 36071011102, 36071001500, 36071015100, 36071001300, 36071002300, 36071002200, 36071001100, 36071001200, 36025970900.

Similarly, it is located within or touches the following zip code(s): 121 zip codes ([show](#))

Data presented in this report summarize the geographies specified in the citation information in each section.

This Area is Served by (or touches):

School District(s): Too many to display

Congressional District(s): New York's 18th District, New York's 19th District

Senators: Kirsten E. Gillibrand (D-NY), Charles E. Schumer (D-NY)

State Senate District(s): State Senate District 42

State House District(s): Assembly District 98, Assembly District 99, Assembly District 100, Assembly District 101, Assembly District 103, Assembly District 122

Population Trends:

As of 2015, this area was home to an estimated N/A people.

Population	2000	2010	2011-2015	Change 2000 to 2011-2015 (%)
Area	415,333	N/A	N/A	N/A
Counties (Delaware)	48,055	47,980	46,901	-2.4%
Counties (Ulster)	177,749	182,493	181,300	2%
Counties (Sullivan)	73,966	77,547	76,330	3.2%
Counties (Orange)	341,367	372,813	375,384	9.96%
State (New York)	18,976,457	19,578,102	19,673,174	3.67%

Source: [Census](#)

Data aggregated by:

2000 Data Contains: 2 Counties

2010 - 2015 Data Contains: 1 State Districts

Racial Characteristics:

Of the people living in this area in between 2011-2015, N/A are White, N/A are African American, N/A are Hispanic, N/A are Asian, N/A are either Native Hawaiian or Pacific Islander, N/A are American Indian or Alaskan Native, N/A are of "some other race" and N/A are of two or more races. In the table below, the percentage of the population that each segment represents in the report area is compared to the percent it represents in the state.

Between 2000 and 2011-2015, the White population changed by -100%, the African American population by -100%, and Asian population by -100%. The number of Hispanics changed by -100%.

Race	2000	2010	2011-2015	Percent of Total Population in 2011-2015	Percent of State Population in 2011-2015 (New York)
White	348,470	N/A	N/A	N/A	64.58%
African American	32,776	N/A	N/A	N/A	15.61%
Asian	6,331	N/A	N/A	N/A	7.98%
Native Hawaiian or Pacific Islander	138	N/A	N/A	N/A	0.03%
American Indian or Alaskan Native	1,387	N/A	N/A	N/A	0.38%
Some Other Race	16,169	N/A	N/A	N/A	8.57%
Two or More Races	10,062	N/A	N/A	N/A	2.85%

Ethnicity	2000	2010	2011-2015	Percent of Total Population in 2011-2015	Percent of State Population in 2011-2015 (New York)
Hispanic	46,881	N/A	N/A	N/A	18.4%

Source: [Census](#)
Data aggregated by:
2000 Data Contains: 2 Counties
2010 - 2015 Data Contains: 1 State Districts

Age Distribution:

In the report area in 2011-2015, 12.81% of the population is over the age of 65. 61.71% are of working age (18-64). 25.48% are under 18, and 6.49% are under 5 years old.

Age	Number of People in Age Group	Percent of People in Age Group	Percent of People in Age Group (New York)
Under 5	29,313	6.49%	5.98%
Under 18	115,109	25.48%	21.61%
Working Age (18-64)	278,749	61.71%	64.05%
Aging (65+)	57,856	12.81%	14.34%

Source: [Census](#)

Data aggregated by:

2015 Data Contains: 2 Counties

Incomes:

The median household income for the study area ranged from \$50,710 to \$70,848, compared to the state of New York with a median of \$59,269, as estimated for 2011-2015 by the Census' American Community Survey.

The number of households divided by income categories is shown in the Annual Income Category table. In 2015, 38.35% of households in the study area had an annual income of less than \$50,000, compared to 43.4% of people in the state of New York.

2011-2015 Annual Income Category	Number of Households	Percent of Households
Senate 42		
Less than \$25,000	29,466	19.17%
\$25,000 - \$34,999	12,279	7.99%
\$35,000 - \$49,999	17,189	11.19%
\$50,000 - \$74,999	26,411	17.19%
\$75,000 - \$99,999	19,951	12.98%
\$100,000 - \$124,999	15,933	10.37%
\$125,000 - \$149,999	11,211	7.3%
\$150,000 or more	21,234	13.82%
County (Delaware)		
Less than \$25,000	5,714	29.66%
\$25,000 - \$34,999	2,222	11.54%
\$35,000 - \$49,999	2,916	15.14%
\$50,000 - \$74,999	3,733	19.38%
\$75,000 - \$99,999	2,006	10.41%
\$100,000 - \$124,999	1,443	7.49%
\$125,000 - \$149,999	619	3.21%
\$150,000 or more	609	3.16%
County (Ulster)		
Less than \$25,000	14,960	21.53%
\$25,000 - \$34,999	6,944	10%
\$35,000 - \$49,999	8,252	11.88%
\$50,000 - \$74,999	12,470	17.95%
\$75,000 - \$99,999	8,906	12.82%
\$100,000 - \$124,999	6,701	9.65%
\$125,000 - \$149,999	3,917	5.64%
\$150,000 or more	7,324	10.54%
County (Sullivan)		
Less than \$25,000	7,192	25.32%
\$25,000 - \$34,999	2,875	10.12%
\$35,000 - \$49,999	3,965	13.96%
\$50,000 - \$74,999	5,829	20.52%
\$75,000 - \$99,999	3,356	11.82%
\$100,000 - \$124,999	2,043	7.19%
\$125,000 - \$149,999	1,199	4.22%
\$150,000 or more	1,945	6.85%
County (Orange)		
Less than \$25,000	22,274	17.78%

\$25,000 - \$34,999	9,404	7.51%
\$35,000 - \$49,999	13,224	10.56%
\$50,000 - \$74,999	20,582	16.43%
\$75,000 - \$99,999	16,595	13.25%
\$100,000 - \$124,999	13,890	11.09%
\$125,000 - \$149,999	10,012	7.99%
\$150,000 or more	19,289	15.4%
State (New York)		
Less than \$25,000	1,661,850	22.88%
\$25,000 - \$34,999	641,022	8.83%
\$35,000 - \$49,999	848,598	11.69%
\$50,000 - \$74,999	1,189,040	16.37%
\$75,000 - \$99,999	863,158	11.89%
\$100,000 - \$124,999	634,452	8.74%
\$125,000 - \$149,999	408,076	5.62%
\$150,000 or more	1,016,083	13.99%

According to the Census' American Community Survey estimates, the median income for a family in 2015 ranged from \$62,222 to \$85,312, compared to the state of New York with a median family income of \$71,913.

Source: [Census](#)

Data aggregated by:

2015 Data Contains: 2 Counties

Immigration:

Data from the U.S. Census Bureau for 2011-2015 indicate that 49,025 people or 10.85% of the population living in this area were "foreign born". Census defines foreign born as anyone who is not a U.S. citizen at birth. This area is located in New York, which, according to the Department of Homeland Security, was home to 141,406 people who were granted Legal Permanent Residence status in 2014. Those LPRs, or "green cards", represent 13.91% of green cards issued in the nation that year.

Source: [Census, Department of Homeland Security](#)

Data aggregated by:

2015 Data for Census Contains: 2 Counties

2014 Data for Department of Homeland Security Contains: 1 States

Families and Households:

The composition of the 106,620 families who reside in the study area is shown in the table below. Families are groups of related people who live together, whereas households refer to the person or group of people living in any one housing unit. Generally, households that do not contain a family are made up of unrelated people living together (eg, roommates) or people living alone. While it is possible for two families to share a household, the difference between the number of households and the number of families in an area shows, approximately, the number of non-family households in a place.

2011-2015 Family Composition	Number of Families	Percent of Families
Senate 42		
Families	106,620	--
Married with Children	36,510	34.24%
Single with Children	13,442	12.61%
Single Female with Children	10,142	9.51%
Other Families	56,668	53.15%
County (Delaware)		
Families	11,731	--
Married with Children	2,493	21.25%
Single with Children	1,560	13.3%
Single Female with Children	1,057	9.01%
Other Families	7,678	65.45%
County (Ulster)		
Families	43,342	--
Married with Children	11,785	27.19%
Single with Children	5,375	12.4%
Single Female with Children	3,818	8.81%
Other Families	26,182	60.41%
County (Sullivan)		
Families	17,832	--
Married with Children	4,542	25.47%
Single with Children	2,763	15.49%
Single Female with Children	1,983	11.12%
Other Families	10,527	59.03%
County (Orange)		
Families	88,788	--
Married with Children	31,968	36%
Single with Children	10,679	12.03%
Single Female with Children	8,159	9.19%
Other Families	46,141	51.97%
State (New York)		
Families	4,625,960	--
Married with Children	1,320,753	28.55%
Single with Children	686,092	14.83%
Single Female with Children	539,183	11.66%
Other Families	2,619,115	56.62%

Note: The category "Single with Children" includes all families that are "Single Female with Children", so all categories do not add up to 100 percent.

Source: [Census](#)

Data aggregated by:

2015 Data Contains: 2 Counties

2011-2015 Household Counts	Number of Households
----------------------------	----------------------

Senate 42	
Households	153,674
County (Delaware)	
Households	19,262
County (Ulster)	
Households	69,474
County (Sullivan)	
Households	28,404
County (Orange)	
Households	125,270
State (New York)	
Households	7,262,279

Source: [Census](#)

Data aggregated by:

2015 Data Contains: 2 Counties

Housing Type:

The type of housing available in this area is described in the table below. Single family homes include all one-unit structures, both attached and detached. Townhouses or duplexes include one-unit attached homes, as well as housing units with two units. Units in small apartment building are buildings with 3 to 49 units; large apartment buildings include buildings with 50 units or more. Other types of housing include vans, boats, recreational vehicles, or other units.

2011-2015 Housing Stock	Number of Units	Percent of Units
Senate 42		
Single family detached homes	120,178	63.7%
Single family attached homes	10,975	5.82%
2-unit homes and duplexes	11,908	6.31%
Units in small apartment buildings	32,866	17.42%
Units in large apartment buildings	4,221	2.24%
Mobile homes or manufactured housing	8,503	4.51%
Other types	0	0%
County (Delaware)		
Single family detached homes	23,224	74.43%
Single family attached homes	266	0.85%
2-unit homes and duplexes	1,022	3.28%
Units in small apartment buildings	2,610	8.36%
Units in large apartment buildings	136	0.44%
Mobile homes or manufactured housing	3,900	12.5%
Other types	44	0.14%
County (Ulster)		
Single family detached homes	57,654	68.85%
Single family attached homes	2,205	2.63%
2-unit homes and duplexes	6,077	7.26%
Units in small apartment buildings	11,230	13.41%
Units in large apartment buildings	1,375	1.64%
Mobile homes or manufactured housing	5,122	6.12%
Other types	70	0.08%
County (Sullivan)		
Single family detached homes	34,232	69.09%
Single family attached homes	1,526	3.08%
2-unit homes and duplexes	2,549	5.14%
Units in small apartment buildings	6,126	12.36%
Units in large apartment buildings	259	0.52%
Mobile homes or manufactured housing	4,856	9.8%
Other types	0	0%
County (Orange)		
Single family detached homes	85,946	61.79%
Single family attached homes	9,449	6.79%
2-unit homes and duplexes	9,359	6.73%
Units in small apartment buildings	26,740	19.22%
Units in large apartment buildings	3,962	2.85%
Mobile homes or manufactured housing	3,647	2.62%
Other types	0	0%
State (New York)		
Single family detached homes	3,420,777	41.86%
Single family attached homes	404,467	4.95%
2-unit homes and duplexes	865,145	10.59%
Units in small apartment buildings	2,019,266	24.71%
Units in large apartment buildings	1,263,165	15.46%
Mobile homes or manufactured housing	195,209	2.39%
Other types	3,696	0.05%

Source: [Census](#)

Data aggregated by:

2015 Data Contains: 2 Counties

Tenure:

Across the area, an estimated 68.19% or 104,795 households owned their home between 2011-2015. The average size of a household in this area ranged from 2.54 to 2.9 between 2011-2015, as compared to the average household size for the county and the state, 2.31 (Delaware), 2.44 (Ulster), 2.54 (Sullivan), 2.9 (Orange) and 2.63 (New York) respectively.

Source: [Census](#)

Data aggregated by:

2015 Data Contains: 2 Counties

Vacancy:

There were an estimated 188,651 housing units in the study area in 2011-2015, according to the Census' American Community Survey. For 2011-2015, the Census showed an estimated 18.54% of housing units to be vacant, compared to 11.13% in the state of New York.

Source: [Census](#)

Data aggregated by:

2015 Data Contains: 2 Counties

Postal vacancy shows short-term vacancy trends based on addresses where mail has not been collected for over 90 days. Data from Valassis Lists tracks vacancy on a quarterly basis. In the 2nd quarter of 2016, the overall vacancy rate in this area was 2.64%.

Postal Address Vacancy	2015Q1	2015Q2	2015Q3	2015Q4	2016Q1	2016Q2
Senate 42						
Number Vacant - Residential	4,430	4,269	3,731	3,623	3,687	3,629
Percent Vacant - Residential	2.67%	2.55%	2.22%	2.15%	2.18%	2.14%
Number Vacant - Business	1,381	1,342	1,268	1,224	1,209	1,204
Percent Vacant - Business	10.01%	9.69%	9.11%	8.79%	8.66%	8.58%
Overall Vacancy Rate	3.23%	3.1%	2.75%	2.66%	2.68%	2.64%
County (Delaware)						
Number Vacant - Residential	561	560	536	512	561	545
Percent Vacant - Residential	2.8%	2.74%	2.59%	2.47%	2.7%	2.62%
Number Vacant - Business	134	128	117	113	110	115
Percent Vacant - Business	11.37%	10.77%	9.8%	9.49%	9.15%	9.55%
Overall Vacancy Rate	3.28%	3.18%	2.99%	2.85%	3.05%	3%
County (Ulster)						
Number Vacant - Residential	1,153	1,038	917	845	864	815
Percent Vacant - Residential	1.56%	1.4%	1.23%	1.14%	1.16%	1.09%
Number Vacant - Business	394	372	331	318	313	311
Percent Vacant - Business	7.3%	6.91%	6.14%	5.89%	5.79%	5.74%
Overall Vacancy Rate	1.95%	1.77%	1.57%	1.46%	1.47%	1.4%
County (Sullivan)						
Number Vacant - Residential	733	703	630	607	608	587
Percent Vacant - Residential	2.3%	2.18%	1.92%	1.85%	1.85%	1.78%
Number Vacant - Business	141	135	123	122	122	122
Percent Vacant - Business	7.37%	6.95%	6.24%	6.18%	6.16%	6.14%
Overall Vacancy Rate	2.59%	2.45%	2.17%	2.09%	2.09%	2.02%
County (Orange)						
Number Vacant - Residential	3,697	3,566	3,101	3,016	3,079	3,042
Percent Vacant - Residential	2.75%	2.64%	2.29%	2.23%	2.27%	2.23%
Number Vacant - Business	1,240	1,207	1,145	1,102	1,087	1,082
Percent Vacant - Business	10.44%	10.13%	9.58%	9.22%	9.07%	8.98%
Overall Vacancy Rate	3.38%	3.25%	2.88%	2.8%	2.82%	2.78%
State (New York)						
Number Vacant - Residential	162,517	155,576	134,815	129,965	125,774	128,429
Percent Vacant - Residential	2.09%	2%	1.73%	1.67%	1.59%	1.63%
Number Vacant - Business	67,511	66,393	61,434	59,954	53,428	54,581
Percent Vacant - Business	11.71%	11.5%	10.69%	10.4%	8.67%	8.88%
Overall Vacancy Rate	2.76%	2.66%	2.35%	2.27%	2.11%	2.15%

Source: [Valassis Lists](#)

Data aggregated by:

2015q1 - 2016q2 Data Contains: 2 Counties

Employment:

The following table shows the number of people who were employed, unemployed, in the labor force, and the unemployment rate for the market in which the report area is located, according to the Bureau of Labor Statistics.

Unemployment rate	June 2016	July 2016	August 2016	September 2016	October 2016	November 2016
City (Middletown)						
Employed	13,313	13,350	13,226	12,997	12,986	12,921
Unemployed	608	627	599	716	676	631
In Labor Force	13,921	13,977	13,825	13,713	13,662	13,552
Unemployment Rate	4.4	4.5	4.3	5.2	4.9	4.7
County (Delaware)						
Employed	18,667	18,941	18,727	18,641	18,614	18,400
Unemployed	979	1,034	960	992	935	943

In Labor Force	19,646	19,975	19,687	19,633	19,549	19,343
Unemployment Rate	5	5.2	4.9	5.1	4.8	4.9
County (Ulster)						
Employed	86,804	86,131	85,540	85,290	85,706	84,957
Unemployed	3,658	3,976	3,851	3,896	3,749	3,663
In Labor Force	90,462	90,107	89,391	89,186	89,455	88,620
Unemployment Rate	4	4.4	4.3	4.4	4.2	4.1
County (Sullivan)						
Employed	33,100	34,261	34,104	32,400	31,995	31,619
Unemployed	1,438	1,503	1,473	1,604	1,585	1,549
In Labor Force	34,538	35,764	35,577	34,004	33,580	33,168
Unemployment Rate	4.2	4.2	4.1	4.7	4.7	4.7
County (Orange)						
Employed	175,480	175,972	174,333	171,312	171,175	170,306
Unemployed	7,372	7,861	7,571	7,843	7,730	7,238
In Labor Force	182,852	183,833	181,904	179,155	178,905	177,544
Unemployment Rate	4	4.3	4.2	4.4	4.3	4.1
Metro Area (New York-Newark-Jersey City, NY-NJ-PA Metro Area)						
Employed	9,629,849	9,628,155	9,565,347	9,523,918	9,545,136	9,563,297
Unemployed	471,483	529,781	519,715	519,406	498,897	446,892
In Labor Force	10,101,332	10,157,936	10,085,062	10,043,324	10,044,033	10,010,189
Unemployment Rate	4.7	5.2	5.2	5.2	5	4.5
Metro Area (Kingston, NY Metro Area)						
Employed	86,804	86,131	85,540	85,290	85,706	84,957
Unemployed	3,658	3,976	3,851	3,896	3,749	3,663
In Labor Force	90,462	90,107	89,391	89,186	89,455	88,620
Unemployment Rate	4	4.4	4.3	4.4	4.2	4.1
State (New York)						
Employed	9,248,055	9,218,369	9,181,124	9,141,754	9,151,160	9,136,604
Unemployed	438,982	480,613	474,681	486,668	476,060	450,246
In Labor Force	9,687,037	9,698,982	9,655,805	9,628,422	9,627,220	9,586,850
Unemployment Rate	4.5	5	4.9	5.1	4.9	4.7

The following Cities that are within or contain the report area have no data available: Ellenville, South Fallsburg, Kerhonkson, Rock Hill, Cragmoor, Scotchtown, Downsville, Monticello, Gardiner, Mechanicstown, Goshen, Delhi, Tuxedo Park, Livingston Manor, Wallkill, Port Jervis, Liberty, Greenwood Lake, Warwick, Tillson, Florida, Walker Valley, Rosendale Hamlet, New Paltz, Woodridge, Walton, Smallwood, Narrowsburg, Washington Heights, Maybrook, Wurtsboro, Napanoch, High Falls, Watchtower, Otisville, Hortonville, Roscoe, Callicoon, Jeffersonville, Bloomingburg, Unionville

Source: [BLS](#)

In this area in 2011-2015, the Census estimates that people were employed in the following industries:

Employment by Industry	People Employed	Percent Employed in this Industry	Percent Employed in this Industry in New York
Accommodation and Food Services Industry Employment	12,396	6.08%	7.03%
Administrative and Support and Waste Management Services Industries Employment	6,933	3.4%	3.75%
Agriculture, Forestry, Fishing and Hunting Industry Employment	1,571	0.77%	0.52%
Arts, Entertainment, and Recreation Industries Employment	3,990	1.96%	2.43%
Educational Service Industry Employment	22,605	11.09%	10.94%
Finance, Insurance, Real Estate and Rental and Leasing Industries Employment	11,395	5.59%	8.05%
Health Care and Social Assistance Industry Employment	31,394	15.4%	16.51%
Information Industry Employment	4,944	2.42%	2.93%
Manufacturing Industry Employment	14,784	7.25%	6.49%
Management of Companies and Enterprises Industry Employment	77	0.04%	0.07%
Other Services Industry Employment	9,661	4.74%	5.03%
Professional, Scientific, and Technical Services Industry Employment	10,637	5.22%	7.63%
Public Administration Employment	14,100	6.92%	4.61%
Retail Trade Industry Employment	27,426	13.45%	10.82%
Construction Industry Employment	12,603	6.18%	5.55%
Transportation and Warehousing, and Utilities Industries Employment	12,261	6.01%	5.11%
Wholesale Trade Industry Employment	6,938	3.4%	2.48%
All Other Industries Employment	179	0.09%	0.07%

Source: [Census](#)

Data aggregated by:

2015 Data Contains: 2 Counties

Crime:

The crime rates per 100,000 persons in the Census Place and county in which the study area is located, as reported by the FBI's Uniform Crime Reports, are as follows. Data was reported by the FBI for selected Census Places and counties, so data may be unavailable for your study area.

Crime Rates per 100,000 persons	2008	2009	2010	2011	2012	2013	2014
City (Ellenville)							
Aggravated Assault	541.66	617.13	701.33	312.95	360.92	339.48	243.07
Burglary or Larceny	2,682.49	2,828.49	2,224.91	2,575.83	2,863.33	4,194.96	2,746.72
Motor Vehicle Thefts	25.79	25.71	72.55	48.15	N/A	N/A	48.61
Murder	N/A	N/A	N/A	N/A	N/A	N/A	N/A
Rape	51.59	N/A	N/A	72.22	72.18	24.25	24.31
Robbery	25.79	51.43	96.74	120.37	24.06	48.5	48.61
City (Middletown)							
Aggravated Assault	320.12	343.35	281.28	336.74	412.04	215.76	274.37
Burglary or Larceny	3,744.99	3,850.16	4,069.64	3,268.11	3,271.7	2,945.09	2,909.75
Motor Vehicle Thefts	173.56	100.3	99.69	88.61	66.91	118.67	79.42
Murder	19.28	3.86	3.56	7.09	7.04	3.6	3.61
Rape	54	30.86	24.92	31.9	49.3	21.58	10.83
Robbery	289.26	219.9	224.31	202.04	334.57	169.01	162.45
City (Monticello)							
Aggravated Assault	274.77	447.05	564.97	873.3	507.01	425.4	493.05
Burglary or Larceny	4,106.24	2,913.52	2,423.43	3,774.42	3,892.04	4,117.29	4,332.89
Motor Vehicle Thefts	91.59	46.25	74.34	162.82	44.74	75.96	N/A
Murder	N/A	15.42	14.87	N/A	N/A	N/A	29.88
Rape	45.79	46.25	44.6	44.4	149.12	60.77	119.53
Robbery	228.97	246.65	252.75	207.22	119.3	243.09	268.94
City (Goshen)							

Aggravated Assault	126.56	125.61	55.01	54.75	54.41	N/A	74.42
Burglary or Larceny	1,789.91	1,489.32	1,411.81	1,405.37	1,396.45	1,185.19	930.23
Motor Vehicle Thefts	36.16	17.94	18.34	18.25	18.14	N/A	18.6
Murder	N/A	N/A	N/A	N/A	N/A	N/A	N/A
Rape	N/A	N/A	N/A	N/A	N/A	18.52	N/A
Robbery	N/A	17.94	N/A	N/A	N/A	18.52	18.6
City (Delhi)							
Aggravated Assault	N/A	N/A	64.79	161.24	32.37	33.5	132.1
Burglary or Larceny	877.51	1,510.89	1,295.76	1,515.64	1,003.56	1,139.03	1,321
Motor Vehicle Thefts	N/A	N/A	64.79	64.5	32.37	67	66.05
Murder	N/A	N/A	N/A	N/A	N/A	N/A	N/A
Rape	N/A	N/A	N/A	N/A	N/A	N/A	N/A
Robbery	36.56	35.14	32.39	N/A	32.37	N/A	33.03
City (Port Jervis)							
Aggravated Assault	185.75	207.9	192.57	101.49	246.47	92.07	173.87
Burglary or Larceny	2,207.17	3,118.5	3,443.59	3,258.91	2,912.84	3,233.97	3,373.13
Motor Vehicle Thefts	32.78	65.65	56.64	78.94	123.24	34.53	23.18
Murder	N/A	N/A	N/A	11.28	11.2	11.51	11.59
Rape	32.78	32.83	56.64	11.28	44.81	34.53	N/A
Robbery	43.71	87.54	79.29	78.94	89.63	34.53	81.14
City (Liberty)							
Aggravated Assault	283.43	130.07	387.07	543.97	273.97	396.73	258.76
Burglary or Larceny	3,942.28	4,422.48	3,870.67	5,326.38	5,045.66	4,737.46	5,034.11
Motor Vehicle Thefts	154.6	130.07	91.07	203.99	91.32	70.01	141.14
Murder	25.77	N/A	N/A	N/A	N/A	N/A	N/A
Rape	103.07	52.03	68.31	90.66	182.65	46.67	141.14
Robbery	103.07	N/A	N/A	135.99	136.99	46.67	94.1
City (Greenwood Lake)							
Aggravated Assault	466.74	117.06	63.41	63.13	188.21	64.14	64.41
Burglary or Larceny	1,400.23	995.02	1,585.29	662.88	752.82	609.36	1,062.8
Motor Vehicle Thefts	29.17	87.8	31.71	N/A	N/A	64.14	96.62
Murder	N/A	N/A	N/A	N/A	N/A	N/A	N/A
Rape	29.17	N/A	31.71	N/A	N/A	N/A	32.21
Robbery	N/A	N/A	31.71	31.57	N/A	N/A	N/A
City (Florida)							
Aggravated Assault	71.94	141.29	N/A	N/A	N/A	N/A	N/A
Burglary or Larceny	1,438.85	812.43	1,164.84	421.64	244.5	1,548.21	837.7
Motor Vehicle Thefts	N/A	35.32	N/A	N/A	N/A	N/A	N/A
Murder	N/A	N/A	N/A	N/A	N/A	N/A	N/A
Rape	N/A	N/A	N/A	N/A	N/A	N/A	N/A
Robbery	N/A	N/A	N/A	N/A	N/A	N/A	N/A
City (Woodridge)							
Aggravated Assault	N/A	92.25	472.26	117.51	236.97	844.39	375
Burglary or Larceny	N/A	276.75	1,889.02	1,997.65	1,184.83	2,050.66	1,750
Motor Vehicle Thefts	N/A	92.25	N/A	N/A	118.48	N/A	125
Murder	N/A	N/A	N/A	N/A	N/A	N/A	N/A
Rape	N/A	N/A	N/A	N/A	N/A	N/A	N/A
Robbery	N/A	N/A	N/A	N/A	N/A	N/A	N/A
City (Walton)							
Aggravated Assault	247.88	212.54	97.15	64.47	162.5	166	268.46
Burglary or Larceny	1,735.13	2,125.4	1,651.55	1,289.49	2,014.95	2,257.64	2,583.89
Motor Vehicle Thefts	106.23	35.42	64.77	N/A	N/A	N/A	33.56
Murder	N/A	N/A	32.38	N/A	N/A	N/A	N/A
Rape	N/A	N/A	32.38	64.47	32.5	33.2	33.56
Robbery	N/A	35.42	N/A	32.24	N/A	N/A	33.56
City (Maybrook)							

Aggravated Assault	N/A	N/A	N/A	N/A	N/A	33.89	N/A
Burglary or Larceny	750.06	802.92	338.07	N/A	N/A	440.53	348.43
Motor Vehicle Thefts	N/A	24.33	33.81	N/A	N/A	67.77	31.68
Murder	N/A	N/A	N/A	N/A	N/A	N/A	N/A
Rape	N/A	N/A	N/A	N/A	N/A	N/A	N/A
Robbery	24.2	N/A	N/A	N/A	N/A	33.89	N/A
County (Delaware)							
Aggravated Assault	138.93	122.09	97.96	107.89	94.11	86.69	103.24
Burglary or Larceny	1,419.73	1,489.09	1,392.25	1,491.83	1,447.21	1,603.74	1,539.75
Motor Vehicle Thefts	32.56	28.34	47.94	45.65	37.64	34.68	39.54
Murder	N/A	N/A	2.08	2.07	2.09	4.33	N/A
Rape	10.85	21.8	14.59	33.2	23	15.17	54.91
Robbery	15.2	13.08	6.25	16.6	14.64	10.84	8.79
County (Ulster)							
Aggravated Assault	181.02	175.24	170.97	122.74	113.39	114.41	104.46
Burglary or Larceny	1,701	1,824.31	1,819.25	1,820.38	1,952.76	1,773.89	1,597.79
Motor Vehicle Thefts	53.21	64.27	59.18	53.46	41.98	30.25	24.32
Murder	3.29	0.55	1.1	1.09	0.55	1.65	2.76
Rape	27.98	14.83	16.99	23.46	16.9	17.05	49.19
Robbery	38.95	53.83	34.52	35.46	20.72	28.6	27.08
County (Sullivan)							
Aggravated Assault	180.22	174.11	203.75	195.13	151.33	169.55	146.23
Burglary or Larceny	2,021.65	1,729.35	1,846.62	2,161.86	2,209.14	1,961.58	1,881.42
Motor Vehicle Thefts	75.75	44.51	65.77	66.76	54.32	52.17	52.23
Murder	5.22	2.62	3.87	2.57	1.29	1.3	3.92
Rape	35.26	28.8	29.66	25.68	43.98	23.48	67.89
Robbery	35.26	36.66	42.55	32.09	37.51	28.69	35.25
County (Orange)							
Aggravated Assault	164.33	150.1	162.37	144.1	165.83	134.3	139.63
Burglary or Larceny	2,041.91	2,010.17	2,165.42	2,071.99	2,157.63	1,985.71	1,810.12
Motor Vehicle Thefts	85.44	69.85	65.11	65.67	63.41	57.56	49.9
Murder	3.41	2.4	4.71	2.44	2.39	3.2	1.86
Rape	18.08	12.26	14.13	14.38	17.78	19.19	37.16
Robbery	86.49	85.58	93.65	104.21	99.23	73.28	63.44

The following Cities that are within or contain the report area have no data available: South Fallsburg, Kerhonkson, Rock Hill, Cragmoor, Scotchtown, Downsville, Gardiner, Mechanicstown, Tuxedo Park, Livingston Manor, Wallkill, Warwick, Tillson, Walker Valley, Rosendale Hamlet, New Paltz, Smallwood, Narrowsburg, Washington Heights, Wurtsboro, Napanoch, High Falls, Watchtower, Otisville, Hortonville, Roscoe, Callicoon, Jeffersonville, Bloomingburg, Unionville

Source: [FBI UCR and DOJ](#)

Endnotes:

Calculations presented here were performed by staff at PolicyMap and are based on public and proprietary data sources.

Depending on the type of size of the area selected for this report, the above values capture data for the block groups, tracts, counties, etc, in which at least 50% of their areas are contained. If this report is run for a zip code, some data will be unavailable, as zip code values for some topics are not available.

For custom areas, such as radii, custom regions, school districts, and political districts, Census ACS data was calculated by summing the following component County in 2000: Sullivan, Orange, and the following component State District in 2011-2015: State Senate District 42.

Any change calculations included in this report reflect PolicyMap's translation of boundary changes from 2000 to 2010. Therefore, they may not match a calculation done using the 2000 and 2011-2015 values shown in the report.

Estimates of tenure, incomes, and housing stock are provided by the ACS for 2011-2015. Data on legal permanent residents is from the Department of Homeland Security, and, for all areas, describes the state in which that area is located. For more information on demographic data in PolicyMap, see the related entry for [Census: Decennial Census and ACS](#) and for more information on immigration data in PolicyMap, see the entry for the [Department of Homeland Security Immigration Yearbook](#) in our Data Directory.

Postal vacancy data in this report is from a resident and business list compiled by Valassis Lists. This data shows a point-in-time snapshot of vacant addresses. For more information on Valassis Lists vacancy data, see our [Data Directory](#).

The source of crime data in the tables presented here is Federal Bureau of Investigation's Uniform Crime Reporting (UCR) Program, which compiles standardized incident reports from local law enforcement agencies in order to produce reliable, uniform, and national crime data. The UCR Program collects data on known offenses and persons arrested by law enforcement agencies. For details on this dataset, see the related entry for [FBI Uniform Crime Reports](#) in the Data Directory. Crime data in this report is not summed or aggregated, but rather listed for each of the complete areas within the study area for which crime is reported.

For the separate Employment and Crime Sections in this report, only locations for which data are available are included in the tables. If the section does not include information, no data was available for any of the locations or component parts of the area you requested for this report.

PolicyMap's [Terms of Use](#) apply to the creation and use of this report.